

Strings forever (Kanon)

Kontrabass

1.

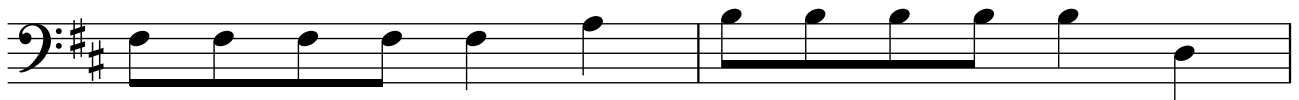


Los mau, wie mir ü - si Gi - ge, Brat - sche, Bäss u Cel - li stri - che,

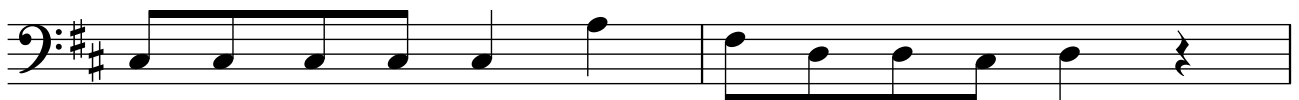


nei, mir bru - che gar ke Pin - su, son - den ü - se Boge.

2.



A - fa mit - em Ab - strich, wi - ter mit em Uf - strich,



nid z'ver-wächs - le mit e - me - ne Brot - uf - strich.

3.



Pous. Pous. Pou-se Pou-se. Ja, die ghört dänk ou der-zue.

4.



Sin - ge u klin - ge, mir hei no lang nid gnue.